



VOTER

League of Women Voters of Southwest Riverside County

Issue 3, Volume 21

April 2006

President's Corner

If you would prefer to receive the e-newsletter version of the VOTER, please send your current email address to lottiefox@verizon.net.

I wish to thank the members of the Board who have worked so hard and with such dedication to carry on this League's work for the past year. Please join me at Annual Meeting on May 27 to add your thanks for their efforts. Slots are open for new board members, so please consider the value to be gained by serving in a leadership role for this organization. There's a wealth of knowledge and experience to be gained; such knowledge and experience transfers well to other endeavors in life that you are or contemplate undertaking. Be a member of a respected group that works to educate the public on election issues, provides informational forums, holds training workshops, and studies current issues with an eye to enhancing local communities. It's an "uplifting" experience!

Charollette Fox

CALENDAR

Desert Unit

Saturday, May 9 - 10:00am

Home of Terry Dean
2482 Toledo Avenue
Palm Springs, CA

(call for directions, 760-302-5908)

Contact: Betty Mann, (760) 200-3877

blm65054@worldnet.att.net

LWVC Council

May 6 & 7

Holiday Inn Capitol Plaza
300 J Street
Sacramento, CA 95814

Open to all members, registration required.

Info and registration available online at www.lwvc.org

Board Meeting

Friday, May 12 - 1:30pm

Ramona Community Room
Miller-Jones Funeral Home

1501 West Florida (between Lyons & Palm)
Hemet, CA 92543

ENACT Meeting

Saturday, May 13 - 10:00am

Location pending. For information, contact:

Diane Mitchell, dkmitchell@verizon.net or

Charollette Fox, lottiefox@verizon.net

Solar Boat Races

Friday/Saturday May 19 & 20 - All day both days

Lake Skinner

This 4th annual event is a competition among high school students from throughout Southern California to put their technical, academic, artistic, and endurance skills to the test. Boats built from kits and powered by solar panels, are "piloted" by a student in qualifying heats on Friday and competition events on Saturday.

Admission to the event is free, however, there is a \$2 entrance fee per car for the Lake Skinner Reserve.

Annual Meeting

Saturday, May 27 - 1:30-3:30pm

Ramona Community Room
Miller-Jones Funeral Home
1501 West Florida (between Lyons & Palm)
Hemet, CA 92543

LWVUS Preconvention Briefing

Saturday, June 3 - 9:30am

Pasadena League Office
1353 N. Hill Avenue
Pasadena, CA 91104

All southern California members are invited to attend. National Convention will be held in Minneapolis in June. Come meet our delegates and learn what is proposed for the LWVUS 2006-2008 biennium. Refreshments and coffee provided.

Temecula Unit

Saturday, June 10 - 10:00am to Noon

Temecula Library
41000 County Center Drive
Temecula, CA 92591

Speakers will be judges of the Riverside County Superior Court. Open to the public; no cost to attend. Refreshments will be served. Also see the Calendar posted on our website, www.swrc.ca.lwvnet.org

The only known cure for ignorance, is education.

LEGISLATIVE PRIORITIES FOR 2006

Adopted by the LWVC Board of Directors March 12, 2006

To maximize resources at the state level, the LWVC Legislative Committee met to determine the general categories for bills and initiatives that could be addressed for the balance of the year. The three areas in bold remain unchanged from the adopted priorities determined by the membership at the 2005 state convention. Items 2-5 amplify the Board's commitment to be more responsive to the needs of our program directors, legislative consultants, and local League interests.

1. Priority Issues

Redistricting Reform

- Support redistricting by an independent commission using fair criteria and an open, transparent process

State and Local Finances

- Support responsible financing for infrastructure improvement and development
- Support equitable and adequate generation and distribution of tax revenues

Health Care

- Support a universal single payer health care system
- Support continued funding of the safety net

2. Support requests from local Leagues and ILOs for advocacy on bills of specific interest to their jurisdictions.
3. Take action as appropriate on core issues: Elections, Voting Rights, Campaign Finance Reform, and Reproductive Choices.
4. Consider program director recommendations for action on the highest priority bills in their program areas.
5. Review all statewide ballot measures and recommend a position or neutrality on each one to the LWVC Board of Directors.

For late-breaking or in-depth information, access the state and national websites from our local website, www.swrc.ca.lwvnet.org.



INFRASTRUCTURE BOND UPDATE

The specific benefits, costs, and projects intended to be covered by this bond proposal are still emerging. Through conference calls, meetings, and research, our latest information is still part speculation and part fact. Some of the following is from media reports.

- the major components are education, transportation, and flood control/levees
- high speed rail may be out
- water issues are still big, and opposition to new water storage projects is expected to continue, with perhaps the Lake Perris reservoir in Riverside County being an exception
- because an initiative on water/parks may be ready for the voters, most of the provisions on water/parks may not be in the bond proposal

PARKS-WATER BOND CLOSER TO BALLOT

(excepted from San Jose Mercury News, April 27, 2006, Paul Rogers, staff writer)

"A coalition of 11 leading environmental groups has turned in nearly double the number of signatures needed to qualify the largest parks and water bond in state history for the November ballot..."

"The measure would raise \$5.4 billion to shore up aging levees in San Francisco Bay's delta, build new drinking water treatment plants, fund flood control, restore salmon runs and purchase new parks from Monterey Bay to Lake Tahoe to Los Angeles. Roughly half would fund parks and half water projects. None is for building new dams..."

"Because California's population is growing by more than 500,000 people every year...the group contends that the state must preserve beaches, forests, rivers and streams before they are lost to sprawl..."

"Critics call the measure a freelance effort that should have been included in a more coordinated statewide plan for spending...still unclear if what happens if Schwarzenegger and lawmakers come to an agreement. Recently they have said they are negotiating a \$30 billion bond measure that would include roads, schools and levees, without much for parks."

"The effort reflects the breakdown in Sacramento, said pollster Mark Baldassare of the Public Policy Institute in San Francisco. 'There's a vacuum, and in the absence of a measure from the Legislature and governor, it provides an opportunity for interest groups to fill that vacuum.' "
www.mercurynews.com/mld/mercurynews/news/politics/14440684.htm

**The choice is simple.
You can either stand up and be counted in,
or, you can lie down and be counted out.**

TAXES



If you think you can keep everything to yourself,
the IRS doesn't.

The best things in life are free—plus tax, of course.



To insure that your newsletter and other
correspondence reaches you, please remember to
report changes to us.

Contact Charolette Fox (951) 302-0180.

*Guests are always
welcome !!*

PLEASE REMEMBER US IN YOUR
WILL OR TRUST

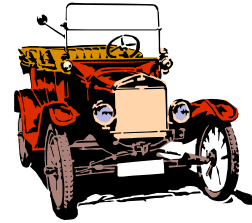
STAYIN' IN TUNE

Keep your mind alive! Learn about issues,
meetings and events by visiting our website

www.swrc.ca.lwvnet.org



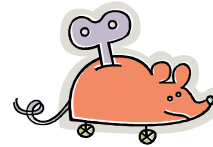
Donate your old car to League!



Thinking of turning in ol' Betsy for a shiny
new hybrid?

Donate your used car, boat, RV or
motorcycle by calling 1-800-320-0476.
You'll get a deduction on your taxes, avoid
a hassle at the DMV and provide a new
source of funding for League.

Be sure to mention that the donation is for
the League of Women Voters.



The engine won't go without volunteers like
you!

Contact Sue Leuschen to learn what you can do to
help with elections in 2006.

shoelace@lasercom.net

Contact Betty Mann to help in the desert area with
Pros & Cons meetings for the public.

blm@att.net

Contact Charolette Fox in Temecula if you want to
help with Annual Meeting activities. We need a
parliamentarian, a timer, and help at the sign-in
table.

lottiefox@verizon.net

Help distribute the Easy Voter Guide.
The guide is available in 5 languages. If you belong
to a church, organization, or homeowner
association that needs easy-to-read information on
the ballot measures, call Charolette to arrange for
pickup. 915-302-0180

VOTER

League of Women Voters of Southwest Riverside County

32800 Hupa Drive
Temecula, CA 92592

Address Correction Requested

FIRST-CLASS MAIL

If you enjoyed this issue, why not
share it with a friend? Please pass
it on and help us build our readership
Thank you.

VOTER

Published nine times a year by the League of
Women Voters of Southwest Riverside County

President: Charolette Fox 951-302-0180
Secretary: Daisy McCleary 951-845-7191
Treasurer: Diane Mitchell 951-927-1775
Voters Service: Sue Leuschen 951-765-5448
Legislative Action: Charolette Fox 951-302-0180
Desert Unit Coord: Betty Mann 760-200-3877

Email: lwv.swriverside@verizon.net

The League of Women Voters is a nonpartisan organization that encourages the informed and active participation of citizens in government and influences public policy through education and advocacy. The League does not support or oppose political parties or candidates. We do, however, advocate for or against issues based on positions arrived at by member consensus. Membership is open to men and women of voting age.

It's easy to join the League of Women Voters!

ANNUAL DUES (include membership in local,
California, and National Leagues):

Individual - \$50.00
Household - \$25.00
Student - \$36.00

Make checks payable to:
LWV Southwest Riverside County
Mail to: Diane Mitchell
43931 Mandarin Drive
Hemet, CA 92544

Name(s): _____

Address: _____

Phone: _____

E-mail: _____

Check one: _____ new _____ renewal

Contribution: _____

TOTAL AMOUNT OF CHECK: _____

Dues and contributions to the League are not deductible for
Federal Income Tax Purposes.