



VOTER

League of Women Voters of Southwest Riverside County

Issue 5, Volume 21

July 2006

A GUIDE TO CALIFORNIA GOVERNMENT

New residents to California, students, teachers, voters, the curious and the well-informed can all access one of League's newest and greatest resources online. A Guide to California Government has been a publication of the League of Women Voters of California for several years. This hardcopy book is a layperson's workbook about the inner sanctum of our state capitol and how the legislature works.

An editing and updating process is currently underway for the hardcopy publication, a veritable roadmap for every civics student or community activist. In the meantime, go to www.guidetogov.org to begin using an online version with several search capabilities.

Look what you can do! Tell your friends and remember the website next time you have a question.

34 MILLION FRIENDS OF THE UNITED NATIONS POPULATION FUND

30 Year LWV member from the San Bernardino branch is cofounder of 34 Million Friends, a 4 year long grassroots movement asking 34 million Americans to chip in at least one dollar to make up for the Bush Administration's refusal to release the \$34 million Congress votes every year for UNFPA. UNFPA helps the world's most vulnerable women with reproductive health care and family planning. 34 Million Friends is endorsed by the umbrella group, the National Council of Women's Organizations. Please visit www.34millionfriends.org for more information. Make a tax deductible donation by sending a dollar or check made out to 34 Million Friends and mail to Americans for UNFPA, PO Box 681, Toms River NJ 08754-9922. This PO Box is exclusive to 34 Million Friends. The \$3.1 million raised so far has sent a wonderful message to the world's women from the American people.

CALENDAR

Desert Unit

This Unit is dark until September.

Contact: Betty Mann, Unit Chair, (760) 200-38
blm65054@worldnet.att.net

Board Meeting for July

To be announced.

For a more complete calendar of League events, go to www.swrc.ca.lwvnet.org

TEMECULA UNIT MEETING & WORKSHOP

Saturday, July 22 - 2:00-4:00pm
Temecula Library
41000 County Center Drive
Temecula, CA 92591

Program: Student, Tracy Empson, 3-time national medalist will present her 2006 award winning documentary, "The Bonus March of 1932"

Workshop: Conducting Common Interest Group Elections
Recent legislation provides for impartial parties to conduct or monitor elections for certain groups such as homeowner associations.

This meeting of the Temecula Unit will discuss SB 61, the legislation, and possible future member involvement.

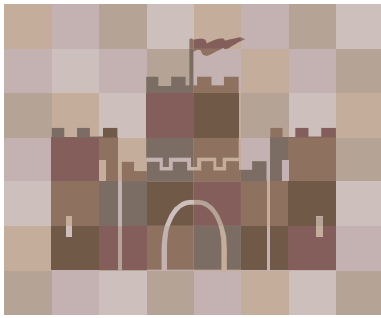
No cost to attend.

For information contact Charolette Fox at
lottiefox@verizon.net

To learn more about the League, visit these sites:

www.swrc.ca.lwvnet.org
www.smartvoter.org

To watch a trailer from the film "An Inconvenient Truth" or to learn more about global warming, go to <http://www.climatecrisis.net>
To find where and when the movie will be playing near you, go to <http://www.climatecrisis.net/findatheater>



YOUR HOME IS YOUR CASTLE Changing Your Kingdom

The California Energy Commission regularly provides useful information for homeowners, businesses, and public buildings in an electronic newsletter called *E-newswire*. A recent issue announced a new home improvement show that discusses designing and building energy-efficient sustainable homes. The series, "Building Green" airs on PBS.

E-newswire provides updates on energy efficient programs, energy research and emerging technologies, national and international perspectives on consumption and conservation, links to other resources, and information on grant opportunities. To subscribe to *E-newswire*, go to the public information website of the California Energy Commission, www.FYPower.org

The Izaak Walton League of America

Another website filled with information and guidance on conservation issues is www.iwla.org. Some publications are available.

The Pacific Institute

The Pacific Institute provides a report on the importance of strong governance, appropriate rates and incentives that will help California meet its water needs well into the future. Download the report at

www.pacinst.org/reports/california_water_2030/index.htm

The Forest Leadership Council

An organization that lists forest service management practices that protect water quality and ecosystems is the Forest Leadership Council. To see a listing of companies and wood products that are "green" for the building and construction of sustainable communities, go to

www.certifiedwood.org



ENACT for SOUTHERN CALIFORNIA

Our League is a member of Environmental Action (ENACT), a committee of the League of Women Voters of California serving the Southern California region. ENACT delegates meet to discuss concerns about the issues of growth and the impacts rapid urbanization is having on air, water, energy, transportation, housing and open space.

By touring energy-efficient buildings, desalinization plants, waste treatment facilities, wetlands, streams, and flood or storm drain systems, League members are able to see what innovative technologies are employed to manage an ever-increasing demand on our water infrastructure.

Onsite visits to farming and agricultural operations provide insight on the use of evapotranspiration (ET) control systems for monitoring and measuring water use. These controllers for water conservation, in conjunction with sensor devices for remotely monitoring the use of herbicides and pesticides, greatly enhance the quality of the produce grown while reducing the risks of soil contamination.

On these jaunts as well as in-depth discussions and presentations on environmental issues, the group stays involved and informed. ENACT may recommend that the LWVC take legislative action on bills affecting the region and which can be supported or opposed based on LWVC positions.

The group meets six to eight times per year in various locations throughout the six southern California Counties. Meetings start at 10:00am on a Saturday morning, include a brown bag working lunch, and usually end at 3:00pm. Date and location of each meeting is announced by email. Visitors are welcome to attend. If you would like to receive an announcement of the next meeting, contact Liz Allen at liz1allen@aol.com.

Staying informed on state issues is easy. These websites provide nonpartisan commentaries:

www.capitolweekly.org

www.leqinfo.ca.gov

www.lao.ca.gov



BIRTHDAY FOR A GREEN COMMUNITY— Oshara Village, Santa Fe, NM

On the evening of the 14th of June 2005 the Santa Fe Board of County Commissioners granted final plat approval for the creation of the Oshara Village, a mixed-use community, located just south of I-25 along the East side of Richards Avenue within walking distance of SFCC. This innovative Neo-Traditional village is dedicated to supporting local businesses, architects, craftsmen and builders, and to providing a framework for creating a sustainable community model as yet unparalleled in the United States.

We are very gratified by the support Santa Fe has shown for the goals of Oshara Village. Not one member of the public spoke in opposition to the Oshara Village Project, while between 30 and 50 supporters attended each hearing. Members of the environmental community, the business community and neighbors came out in support of the values embodied in the Oshara vision; a pedestrian friendly, human scale, mixed use community that creates value by empowering local craftsman, designers, business owners and future residents to be part of the village building process. The plan includes sustainability systems and technologies such as 100% waste water reclamation and reuse, rain harvesting, energy efficient buildings, solar orientation for passive, active and PVs, Community Supported Agriculture and a comfortable bus stop on the Oshara Plaza for the Santa Fe Trails bus line. The Oshara Village plan calls for advanced water conservation covenants and a state-of-the-art water reclamation plant that will return practically every drop of sewer and gray water—cleaned and disinfected—back to each yard and public park. This recycled water will enable lush gardens without using any precious

potable water. In addition, special conduits enabling grid-tied solar power and the use of “Green Building” and energy conserving methods and materials will be encouraged. Oshara is working closely the New Village Institute (NVI), a local nonprofit group, which will conduct a resident education program so the water conservation goals can be achieved. NVI will also provide technology assessment and transfer enabling Oshara’s diverse building contractors, businesses and residents to utilize the most advanced and proven sustainability systems and best practices available.

Oshara will be working with other local nonprofit organizations such as Homewise and Habitat for Humanity to include affordable housing, and NM Solar Energy Association to encourage solar energy use. Friends of Tony Price Museum are also hoping to create a museum and sculpture garden for his world-renowned Swords to Plowshares Atomic Art. The developer hopes Oshara Village can become a fertile ground where the collective genius of Santa Fe builders, craftsmen, organic growers, energy and water innovators, designers and architects, and entrepreneurs can take root and grow synergistically.

Phase I of Oshara Village will consists of 175 residential units (town houses, patio homes, single family and estate homes) and 136,000 square feet of commercial including retail, office, and live/work units. Amenities include a plaza, virtually the same size as the Santa Fe Plaza, a sculpture Garden and Museum site along Richards Avenue. There will be three community parks as well and nearly 40 acres dedicated open spaces preserve are part of the approval. The village founders have also agreed to build a road to connect Richards Avenue to St Francis Drive, and hope to complete all needed documents and begin construction of Phase I in early 2006.

Oshara’s approval would not have happened without the broad backing of so many Santa Fe citizens, elected officials and county staff. Not only is there finally a wide awareness of our common social, economic and environmental challenges, there is also a growing commitment to find common ground and create practical solutions. Oshara Village is one, hopefully of many new forward-thinking frameworks for cooperative action.

**Our lives begin to end the day we become silent
about things that matter.**

- Martin Luther King, Jr.



If you would like to learn more about voter service in general, or about Common Interest Elections, plan to attend the Temecula Unit Meeting on Saturday, July 22, 2:00-4:00pm, at the Temecula library. No cost to attend.

JUNE VOTER SERVICE ACTIVITIES

Preparations for the June Primary election included the distribution of two publications, the Easy Voter Guide and Pros & Cons. Easy Voter Guides are a collaborative effort with League of Women Voters of California taking lead responsibility for production and distribution. For Riverside County, the Guide is printed in five languages—English, Spanish, Vietnamese, Korean, and Chinese. Because grant money was obtained, these pamphlets were available free and could be ordered in quantity by any library, school or community organization.

At 15 cents per copy, the Pros & Cons, a traditional informational newspaper with nonpartisan arguments for and against ballot measures, presented bilingual background material on Propositions 81 & 82. This League purchased the Pros & Cons from treasury funds and made copies available to schools and community groups free of charge.

Smart Voter, the website providing candidates a free venue to post their biography, philosophy, position statements, and contact information was again coordinated for Riverside County by Betty Mann, Francis Talbot-White, Trudell Een and Charolette Fox. Links to the Registrar of Voters, candidate campaign headquarters, ballot look-up, precinct polling locations, and much more was on-line for easy access. A feedback feature allows viewers to ask questions about deadlines, election procedures, where to locate early voting sites, or how to register on-line.

In March, stepped up outreach efforts were discussed at a Regional Voter Service Training workshop held at the March Air Field Museum. Attendees renewed their commitment to providing “the usual” services, but also explored new ways to increase voter education, voter registration, and voter turnout. As other community organizations now emulate the League’s format for candidate forums or informational presentations, our help is needed as trainers and moderators. As such, the door is open to some exciting possibilities.

SB 61, legislation that speaks to Common Interest Group elections, is one such instance where our leadership is needed. Homeowner Associations are the largest segment of community life that is required to conduct elections for their common interest. The legislation directs that certain aspects of HOA business must include an impartial outside party to participate in and/or oversee the election.

Members attending the state League Leadership Council in Sacramento May 6 & 7 learned more about the legislation during a workshop: “Running Local Elections.”

LEAGUE OF WOMEN VOTERS, OTHERS FILE SUIT TO STOP FLORIDA LAW’S ‘CHILLING’ EFFECT ON VOTER REGISTRATION

Non-Partisan Groups Suspend Voter Registration Drives, Claim Onerous & Unconstitutional Fines Represent a ‘Tax on Democracy’

MIAMI, FL - May 18, 2006 -- A new Florida law that imposes crippling fines on voter registration groups was challenged in a lawsuit filed in federal court here today. The plaintiffs, civic organizations and voting rights groups that have been working in Florida through many election cycles without government interference, say that the law has shut down or dramatically curtailed their efforts to help eligible voters get on the rolls.

In filing the lawsuit on behalf of the League of Women Voters of Florida, Miami-based People Acting for Community Together (PACT) and other public interest and labor groups, attorneys at the Brennan Center for Justice at NYU School of Law and the Advancement Project, voting rights advocates representing the plaintiffs along with *pro bono* counsel, have asked the U.S. District Court in Miami to immediately suspend the fines imposed under the challenged law (Fla. Laws 2005-277, Secs. 2 and 7), which went into effect on January 1.

“I’m not sure what our representatives in Tallahassee were thinking when they voted for this law,” said Dianne Wheatley-Giliotti, president of the League of Women Voters of Florida. The Florida League, a plaintiff in the suit, is a nonpartisan, largely volunteer organization that has been helping to register Florida voters since 1939. By a unanimous vote of its Board, the Florida League for the first time has suspended all voter registration operations with its 27 local Leagues across Florida.

“In Iraq, the U.S. Army spent six weeks helping citizens register to vote. We’re not seeking special assistance - only asking that the government get out of our way, and let the League and other civic organizations continue to help each voter exercise the most basic civil right,” Wheatley-Giliotti said. “We’ve been dedicated to this work for 67 years, and we don’t want to stop now.”

The challenged law creates a punishing and complicated tiered regime of deadlines and fines. For each and every voter registration form submitted more than ten days after the form was collected from a prospective voter, the government will impose a fine of \$250, while for each registration form submitted after the passing of a registration deadline, the fine is \$500.

If a registration form is not submitted, for any reason, the fine per form jumps to \$5,000. Most chilling to plaintiffs' activities is the law's adoption of a "strict liability" legal standard, meaning that no extenuating circumstance -- not even destruction of an office by a hurricane -- will excuse the failure to submit a registration form.

Plaintiffs say the impact of multiple fines would devastate the budgets of many non-partisan voter registration groups. For example, the entire annual budget for the Florida League of Women Voters is \$80,000, or the equivalent of just 16 lost registration forms. At the same time, virtually everyone associated with an organization -- from a volunteer canvasser to the organization's Board chair -- can be held personally responsible for paying the fines.

"There's no mistaking the impact of these fines," said Wendy Weiser, co-counsel for the plaintiffs and deputy director of the Democracy Program at the Brennan Center for Justice at NYU School of Law. "Anyone who is a leader of an organization has good reason to be scared of the consequences of authorizing a voter registration drive in Florida today."

"What the State has done is radically raise the cost of doing business for voter registration groups," said Mrs. Wheatley-Giliotti of the Florida League. "In effect, this is a tax on democracy and a tax on democratic participation that makes voter registration work prohibitively expensive for many of the state's leading civic organizations."

"The specific targeting of non-partisan voter registration groups with these onerous fines gives another 'black eye' to Florida, a state already plagued in recent years with a less-than-pristine track record on voter registration and election issues," said Gary Rosen, *pro bono* co-counsel and a shareholder at Ft. Lauderdale law firm Becker & Poliakoff.

The complaint explains that another constitutional failing of the challenged law is its unequal treatment of political parties and non-partisan groups. The law exempts political parties from the fines to be assessed against non-partisan organizations. Plaintiffs claim there is no evidence whatsoever in the legislative record to suggest that late or lost voter registration forms have been more prevalent among Florida's non-partisan groups than among Florida's political parties - in fact, they say, there is no evidence in the record of any serious problem of late or lost voter registration forms.

"These fines will quickly erase from the state some of the most basic sights of American democracy: the non-partisan voter registration table at the mall or bus stop; the unaffiliated registration advocate at a school or workplace; and the encouragement to participate in elections often found in churches and synagogues," said Elizabeth S. Westfall of the Advancement Project, co-counsel for the plaintiffs.

Joining the Florida League of Women Voters in completely suspending Florida voter registration efforts in the face of the new law are PACT and the AFL-CIO, while the American Federation of State, County and Municipal Employees,

Council 79 (AFSCME) has substantially scaled back its voter registration activity.

Should plaintiffs succeed in their lawsuit and the federal court agree that the First Amendment protects voter registration activities from the fines and other burdens Florida has established, the legal outcome will help to head off comparable voter-suppression statutes in other states, such as Ohio, New Mexico, and Colorado.

"More than 50 million Americans are not registered to vote," said Craig L. Siegel of Kramer Levin Naftalis & Frankel LLP, *pro bono* co-counsel for plaintiffs. "Florida and other states should applaud civic groups like the League of Women Voters - not penalize them - for tirelessly working to strengthen our democracy."

Plaintiffs joining the suit include: League of Women Voters of Florida; People Acting for Community Together (PACT), a coalition of community organizations, churches, synagogues and schools based in Miami-Dade County; American Federation of State, County and Municipal Employees, Council 79 (AFSCME); Service Employees International Union (SEIU); Marilyn Wills, president of the Tallahassee League of Women Voters; and unnamed individuals who are eligible to and want to vote this year but will be denied by the challenged law.

Plaintiffs are represented by the Brennan Center for Justice at NYU School of Law and the Advancement Project, and by *pro bono* counsel Kramer Levin Naftalis & Frankel LLP, and Becker & Poliakoff, P.A.



[Major Victory for National Popular Vote in California and inroads in New York and Louisiana](#)

California, Louisiana and New York made strong advances for the National Popular Vote plan for presidential elections in May. The California State Assembly passed the proposal by a strong 49-31 margin, a Louisiana committee passed the proposal and five Republicans in New York introduced the proposal.

[U.S. House Representation for D.C.](#) Voters in the District of Columbia may finally get some representation to go along with their taxation. A bill to give a congressional seat to D.C. and add one at-large seat to Utah passed the House Committee on Government Reform with strong bipartisan support and now heads to the House Judiciary Committee. The proposal touches on other FairVote priorities as well: showing how Congress by statute can increase the number of U.S. House seats and can allow states to use multi-seat districts. The extra seat would mean an additional vote in the Electoral College that would greatly decrease the odds of an electoral tie in presidential races.

GLOBAL WARMING AND “AN INCONVENIENT TRUTH”

Report from NRDC, June 1, 2006

"An Inconvenient Truth," the passionate and inspirational documentary about global warming featuring Al Gore, has opened to rave reviews in New York and Los Angeles and will soon be opening nationwide.

The film, which received standing ovations at the Sundance Film Festival, is based on the former vice president's brilliant multi-media global warming presentation that has enthralled audiences around the world. Washington Post columnist Richard Cohen wrote "you will be captivated, and then riveted and then scared out of your wits."

The film, co-produced by NRDC trustee Laurie David, presents a powerful depiction of the choice before us: we can avert a global warming catastrophe with solutions that exist today, or we can condemn the world's children to a future of drought, disease, floods and lost ecosystems. With wit, intelligence and hope, "An Inconvenient Truth" ultimately brings home the argument that we can no longer afford to view global warming as a political issue, but rather as one of the biggest moral challenges facing our global civilization.

To watch a trailer from the film "An Inconvenient Truth" or to learn more about global warming, go to <http://www.climatecrisis.net>
To find where and when the movie will be playing near you, go to <http://www.climatecrisis.net/findatheater>

LATEST ON COMMUNITY COLLEGES: Fact Sheet #3 for Legislators

On May 1, 2006, The League of Women Voters of California Education Fund sent two copies of the new *Community Colleges: Fact Sheet #3 for Legislators* to the Sacramento offices of all California assembly members and senators—one for each legislator and one for each of their education aides.

Fact Sheet #1 and 2 are available on the LWVC Web site at www.lwvc.org (click on "Citizen Education" under "Voter Education" on the side bar, then on "Community College System Study," and finally on "California Community Colleges: Fact Sheet for Legislators.") *Fact Sheet #3* will be posted on the Web site very soon.



The Working Party For Children

By Jean Cohen, Chair

The Working Party for Children is a statewide network of League of Women Voters members who are Children and Family Issues activists. The WPC began in 1993 after the LWVC Board of Directors adopted the action policy on Children and Family Issues. This policy is spelled out in detail in the LWVC *Action Policies and Positions* publication.

The WPC supports action on programs and policies that assure basic human needs are met, with an emphasis on children and families and health care for all in California. Our over-arching philosophy is that all children are entitled to safe and nurturing care; that caring for children is a societal as well as a family responsibility, and that programs should be supported that prevent poverty and promote self-sufficiency.

While a core group of WPC members meets in Los Angeles, usually on the first Wednesday of the month, WPC supporters statewide are linked by e-mail. It is hoped that each local League will have at least one member on this e-list. We track bills, policies and activities in the areas of child care and development, pre-kindergarten, foster care, child support, domestic violence and child abuse, children's health, juvenile justice, welfare reform and meeting basic human needs.

Some of our members serve as LWVC legislative consultants, recommending measures for League support or opposition... Additionally, WPC e-mail alerts are occasionally sent out urging action by members as individuals on state or federal legislation on which the League has not taken a position. Members are encouraged to make contact with the staff at local offices of their elected officials, keeping them apprised of issues of our interest and concern.

WPC members attend meetings of various organizations, boards and commissions that deal with our issues. The pertinent information exchanged at our regular meetings is sent to all on our e-list. Anyone interested in joining the e-list and receiving WPC minutes and other information is asked to contact Jean F. Cohen, WPC chair, at JCohenLWV@aol.com. Please include the name of your local League as well as your telephone number and e-mail address.

GUIDELINES FOR ASSESSING WASTE-TO-ENERGY PLANTS

The following guidelines were first adopted in 1987 by the LWVC board of Directors to assist local Leagues and the LWVC Legislative Committee in making decisions regarding waste-to-energy plants. They were updated by the board in May 2006.

Waste-to-energy plants (WTE) designed to convert solid waste (garbage), can reduce reliance on land fill sites as well as provide an alternative energy source. Hazardous Materials incineration is NOT COVERED by these guidelines.

Environmentally sound waste-to-energy technologies should be considered the preferred alternative to landfill disposal as even the best designed landfill sites emit 50 percent or more of the gaseous emissions formed by degradation of the waste into the atmosphere. The predominant emission from landfills is methane—a potent greenhouse gas.

Natural Resources positions should be used in concert in order to cover all the environmental issues that may be involved. We urge local Leagues to use LWVC positions on Air Quality, Land Use, Energy, Solid Waste, Water, and Growth Management Policy as well as LWVUS Natural Resources positions. We are indebted to LWV Los Angeles County for their assistance.

1. The League supports the concept of environmentally sound waste-to-energy plants, both as an alternative to land disposal and as a form of resource recovery.
2. To minimize the need for waste-to-energy plants and other waste disposal facilities and their attendant environmental impacts, increased efforts must be made in waste reduction at the source and recycling after use—including mandatory curbside trash separation.
3. The League is opposed to relaxation of air quality standards, regulations or enforcement in order to accommodate waste-to-energy plants. Continuous or frequent monitoring should be done not only for criteria pollutants but for other toxic air contaminants listed by the Environmental Protection Agency, the Air Resources Board or other appropriate regulatory agencies.

4. Continuing research is needed on toxic air contaminants formed during the trash combustion process. As new information becomes available on toxicity and methods of pollution control, appropriate changes should be made in processing and equipment.
5. Siting criteria should be based on a comparative life cycle assessment of the environmental impacts associated with different waste treatment options. Criteria should include assurance that potential pollutants are not transferred from one environmental medium to another.
6. No region of the state should be required to bear an excessive burden of trash disposal that is grossly disproportionate to the waste generated in that particular area.



IT BEARS REPEATING... AB 2118 (Matthews) - Waste-to-Energy

Increased conservation of energy and protection of the environment is becoming more and more achievable. Under existing law, each city, county, and regional agency is already required to develop a source reduction and recycling element. Most have, but source reduction targets remain unmet by some cities. As the need to reduce landfill sites becomes apparent, there is more opportunity for better utilization and extended life for existing sites. Converting waste to energy makes sense.

AB 2118 would define the term “solid waste facility” to include conversion technology facilities (waste-to-energy plants), and would revise the methods for determining the amount of solid waste required to be diverted. The diversion rate was 50% of source reduction, recycling, and composting activities on or after January 1, 2000.

According to CogenWorks, a coalition for energy efficiency and reliability, “Cogeneration is one of the state’s most efficient, local, reliable and environmentally-sound sources of electricity. But at a time when California needs it most, the state is at risk of losing it.” There are a total of 776 cogeneration projects in California, operated by various industries, institutions, agriculture, or crude oil producers. All will soon need to renew their contracts with California’s investor-owned utilities

For the full report, go to “Cogeneration: Clean, Efficient Energy At Risk, April 2006, at www.CogenWorks.com.

QUOTE OF THE MONTH

"I believe unconditionally in the ability of people to respond when they are told the truth. We need to be taught to study rather than to believe, to inquire rather than to affirm."

Septima Clark, educator and civil rights activist

REPORT OF ANNUAL MEETING 2006

The Annual Meeting was held in Hemet, a place central to the numerous cities and unincorporated areas that we serve. Two program presentations were made to open the assembly. The first was the documentary work developed by three young ladies who had researched campus demonstrations during the 1960s in response to the Vietnam War. Through first-hand interviews with former students at Kent State University, Vietnam veterans, political science professors, and others, the teens gave a balanced and persuasive retrospective look at the opinions and actions that shaped American military policy then.

The second presentation was a performance written, produced and acted by four 7th grade students. Dressed as American Suffragists, the message spoke of the struggle for women's right to vote as early as the Seneca Falls Conference. Their performance then moved to the early 1910s, included a simulated march on Washington, D.C. replete with posters and banners, and ended with the importance of the passage of the 19th Amendment in 1919. What a show! We were so pleased to see the depth of understanding these students gained from their research.

The business session followed these presentations. The necessary quorum was not established, so the bylaws, budget, and nominations slate were presented but not adopted. Without the traditional executive committee in place to continue the administration of the League, permission has been asked to operate under a new format—one which redefines the board structure and permits a steering committee to manage the organizational needs on behalf of the members.

The current financial statements and proposed budget are attached as separate documents for member information. Until new bylaws are approved, the old bylaws are in effect. Dues are \$50 per person, \$75 for two people residing at the same address, and are due and payable on July 1, 2006.

Thank all of you for your ongoing support. This League continues to provide voters with access to nonpartisan election information in both printed and electronic form.

Charolette Fox

Guests are always welcome !!

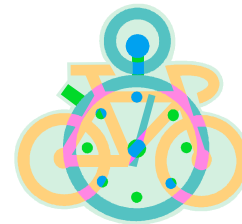
DID YOU NOTICE?

The last page of every e-newsletter is a page with membership information? It can also be used as a mailing "wrapper." Just add postage to mail a hardcopy of the newsletter to friends not on the internet!



To insure that your newsletter and other correspondence reaches you, please remember to report changes to us.
Contact Charolette Fox (951) 302-0180.

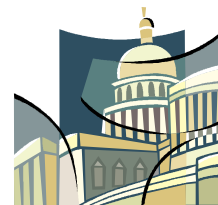
PLEASE REMEMBER US IN YOUR WILL OR TRUST



**The human race is the one that counts.
To win, you have to keep your eye
on the finish line.**

Heat and the high price of gas keeping you home?

Stay informed on late-breaking news or in-depth digests -- go to www.swrc.ca.lwvnet.org for a window on the world.



VOTER

League of Women Voters of Southwest Riverside County

32800 Hupa Drive
Temecula, CA 92592

Address Correction Requested

FIRST-CLASS MAIL

If you enjoyed this issue, why not share it with a friend? Please pass it on and help us build our readership
Thank you.

VOTER

Published nine times a year by the League of Women Voters of Southwest Riverside County

Acting President: Charolette Fox 951-302-0180
Secretary: Daisy McCleary 951-845-7191
Treasurer:
Voters Service: Sue Leuschen 951-765-5448
Legislative Action: Charolette Fox 951-302-0180
Temecula Unit Coord: Charolette Fox 951-302-0180
Desert Unit Coord: Betty Mann 760-200-3877

Email: lwv.swriverside@verizon.net
Website: www.swrc.ca.lwvnet.org

The League of Women Voters is a nonpartisan organization that encourages the informed and active participation of citizens in government and influences public policy through education and advocacy. The League does not support or oppose political parties or candidates. We do, however, advocate for or against issues based on positions arrived at by member consensus. Membership is open to men and women of voting age.

It's easy to join the League of Women Voters!

ANNUAL DUES (include membership in local, California, and National Leagues):

Individual - \$50.00
Household - \$25.00
Student - \$36.00

Make checks payable to:
LWV Southwest Riverside County

Mail to: Charolette Fox
32800 Hupa Drive
Temecula, CA 92592

Name(s): _____

Address: _____

Phone: _____

E-mail: _____

Check one: _____ new _____ renewal

Contribution: _____

TOTAL AMOUNT OF CHECK: _____

Member dues are not tax deductible.
Other contributions to the League are tax deductible for Federal Income Tax Purposes. To send a donation, make your check payable to: LWVSRC Ed Fund.