



# VOTER

*League of Women Voters of Southwest Riverside County*

**Issue 4, Volume 21**

**June 2006**

## *President's Corner*

If you would prefer to receive the electronic version of the *VOTER in color*, please send your current email address to [lottiefox@verizon.net](mailto:lottiefox@verizon.net).

### **"Effective Leaders - Effective Leagues" REPORT OF LEADERSHIP COUNCIL 2006**

Delegates and guests meeting in Sacramento for this year's Leadership Council met to approve the 2006-2007 budget and get update reports from the LWVC staff and board members about this past year's activities. Six workshops were held, designed to cover practical information for effective leadership at the local level. League publications and merchandise emblazoned with the LWV logo was available for purchase in The Marketplace.

Kay Maxwell, LWVUS President, attended both days of the Council, cordially networked with members, and delivered a "State of the National League" address on Saturday evening. She then offered a briefing on the board-recommended program to be presented to delegates at the national Convention in Minneapolis in June.

Leagues participating in the LWVC "Meeting the Challenge" membership program took center stage at one point and presented their goals for increasing membership. They shared information about the project which enabled them to gain publicity and community support that resulted in increased membership. An inspiring range of new ideas and tips for effective member recruitment were encapsulated in these projects. "Meeting the Challenge" will be a five year drive for new members. Those Leagues not accepting the challenge in 2006, have until 2010 to join the effort.

Table topics were devised for Sunday breakfast that allowed open discussion on several League issues. Unstructured and without a host/hostess, Leaguers demonstrated the dynamics that have always been inspiring to me—they got right to the meat of their topic, discussed what they knew of the issue, and if action was required they developed an immediate but effective action plan to address the problem. This interaction continued even after the official close of Council as members talked together while waiting for shuttles or sat together at the airport before boarding their planes.

*Charolette Fox*

## CALENDAR

### Annual Meeting

Saturday, May 27 - 1:30-3:30pm  
Ramona Community Room  
Miller-Jones Funeral Home  
1501 West Florida (between Lyons & Palm)  
Hemet, CA 92543

### Desert Unit

Saturday, June 3 - 10:00am  
Home of Terry Dean  
2482 Toledo Avenue  
Palm Springs, CA  
(call for directions, 760-302-5908)  
Contact: Betty Mann, (760) 200-3877  
[blm65054@worldnet.att.net](mailto:blm65054@worldnet.att.net)

### Temecula Unit

Saturday, June 10 - 10:00am to Noon  
Temecula Library  
41000 County Center Drive  
Temecula, CA 92591  
Speakers will speak on issues relating to the Riverside County Superior Court. Open to the public; no cost to attend. Refreshments will be served. Also see the Calendar posted on our website, [www.swrc.ca.lwvnet.org](http://www.swrc.ca.lwvnet.org)

### Board Meeting for June

To be announced.

## **SAVE THE DATE      SAVE THE DATE**

**Saturday, July 22 - 2:00-4:00pm**  
Temecula Library  
41000 County Center Drive  
Temecula, CA 92591

**Workshop: Conducting Common Interest Group Elections**  
Recent legislation provides for impartial parties to conduct elections for certain groups such as homeowner associations. This meeting of the Temecula Unit will discuss the legislation (SB 61) and the process for member involvement in such elections. No cost to attend.  
Register by Email to Charolette Fox at [lottiefox@verizon.net](mailto:lottiefox@verizon.net)

**The only known cure for ignorance is education.**

## AB 2118 (Matthews) - Waste-to-Energy

Increased conservation of energy and protection of the environment is becoming more and more achievable. Under existing law, each city, county, and regional agency is already required to develop a source reduction and recycling element. Most have, but source reduction targets remain unmet by some cities. As the need to reduce landfill sites becomes apparent, there is more opportunity for better utilization and extended life for existing sites. Converting waste to energy makes sense.

AB 2118 would define the term "solid waste facility" to include conversion technology facilities (waste-to-energy plants), and would revise the methods for determining the amount of solid waste required to be diverted. The diversion rate was 50% of source reduction, recycling, and composting activities on or after January 1, 2000.

According to CogenWorks, a coalition for energy efficiency and reliability, "Cogeneration is one of the state's most efficient, local, reliable and environmentally-sound sources of electricity. But at a time when California needs it most, the state is at risk of losing it." There are a total of 776 cogeneration projects in California, operated by various industries, institutions, agriculture, or crude oil producers. All will soon need to renew their contracts with California's investor-owned utilities.

*"Cogeneration: Clean, Efficient Energy At Risk, April 2006, at [www.CogenWorks.com](http://www.CogenWorks.com).*

## California Legislation

Each week subcommittees of the environmental legislative coalition meet via conference call to determine three to six priority bills in each of the following categories:

- Coast/Ocean, Fish & Game, Habitat, Forestry, Parks, Open Space
- Land use, Infrastructure, CEQA, Transportation
- Air Quality, Global Warming, Alternative Fuels, Petroleum Reduction, Energy
- Water Quality/Resources
- Chemicals, Pesticides, Toxics, Hazardous Waste, Brownfields, Solid Waste, Recycling

To read more about bills you are interested in, go to [www.leginfo.ca.gov](http://www.leginfo.ca.gov). Search by topic, or click on "Legislative Bills," then enter the bill number or the author's name.

Fiscal analysis of bills is provided by the nonpartisan Legislative Analyst's Office, at [www.lao.org](http://www.lao.org).

## PROP 50 GRANT SOUGHT FOR TERTIARY WATER TREATMENT

*Individuals served by the Eastern Municipal Water District are asked to send letters of support before June 8, 2006.*

The Santa Ana Watershed Project Authority's (SAWPA) is filing an application for a Prop. 50 Integrated Regional Water Management Program Grant. Included in the grant application is partial funding for Eastern Municipal Water District's (EMWD) San Jacinto Valley Regional Water Reclamation Facility Tertiary Upgrade/Expansion. An important part of any grant application is letters of support from the community, stakeholders, interested parties, etc.

**Project Description:** The current capacity of the SJV RWRP without nitrification and de-nitrification is 11MGD based on annual average flows. The capacity with nitrification and de-nitrification for a TIN limit of less than 10 mg/l is at 7.5 MGD. However, due to an explosive growth in the area, the facility is experiencing an average dry weather flow rate of 8 MGD. Updated flow projections indicate an immediate need to upgrade the facility to 14 MGD with full nitrification and de-nitrification to meet the NPDES discharge limits of 0.1 mg/L for ammonia and 10 mg/L for TIN.

The existing facility does not have any tertiary treatment facilities. As part of this project, tertiary treatment is designed and constructed to provide tertiary recycled water for beneficial reuse within the EMWD service areas. The project includes design and construction of facilities to treat up to 14 MGD of wastewater and provide tertiary treated recycled water. The overall project is divided into three phases of construction: (1) the tertiary filters are designed and are under construction; (2) the tertiary influent equalization basin is under final design; and (3) the remaining facilities needed to meet Title 22 effluent standards including the contact basin, flocculation basin, chlorination system, and recycled water effluent pump station are also under final design.

**Project Benefits:** Tertiary treatment at the SJV RWRP will allow EMWD to maintain and expand its current water recycling program, as land use changes (agricultural to residential development) significantly reduce opportunities to reuse secondary effluent. Expanded reuse for municipal irrigation will reduce local demand for imported water, and support regional Groundwater Management Plan efforts, through the use of recycled water to irrigate high-value agricultural crops in-lieu of groundwater. Immediate short-term benefits of 8,000 acre feet per year of additional recycled water use are expected as a result of this project.

**Specific Project Benefits:**  
**Imported Water** - This project significantly reduces dependence on imported water by expanding recycling opportunities in the Hemet/San Jacinto area, and allowing the use of recycled water in-lieu of critically overdrafted



**SAMPLE LETTER**  
**(one letter to each individual)**

groundwater supplies, thereby reducing demand on the State Water Project.

**Conjunctive Use** - Recycled water produced as a result of the project is a central element of conjunctive use strategy for the SJV RWRP service area. Plan expansion supports and protects the use of local groundwater by augmenting local water supplies with treated imported water, replenishing local basins through groundwater recharge using seasonal surplus imported water, and using recycled water in-lieu of groundwater.

**Water Recycling** - The project will allow for the increased use of recycled water for municipal and agricultural irrigation in the San Jacinto Valley, reducing demands on local overdrafted groundwater basins and imported water supplies.

**Water Transfer** - The groundwater Management plan adopted for the SJV RWRP service area specifically creates a mechanism by which local farmers can switch from groundwater to recycled water while fully protecting their water rights. The in-lieu use of recycled water will leave more groundwater in the basin for municipal uses and reduce the amount of imported water needed for groundwater replenishment.

**Water and Wastewater Treatment** - This project will ensure EMWD's ability to maximize water recycling while assuring the fail-safe disposal of seasonal surplus recycled water.

**Recreation and Access** - The project will provide recycled water for the California Department of Fish and Game San Jacinto Wildlife Area, a significant recreational asset providing the local communities with high-quality opportunities for hunting and wildlife viewing, and serves as a habitat reserve for multiple endangered species.

**Wetlands Enhancement and Creation** - The project will provide recycled water to maintain seasonal wetlands, as well as irrigate upland habitat areas.

**Environmental and Habitat Protection and Improvement** - The project will provide recycled water to the California Department of Fish and Game San Jacinto Wildlife Area to provide habitat for migratory waterfowl within the wetlands habitat area.

**Groundwater Management** - Groundwater basins in the SJV RWRP service area are chronically overdrafted. The project will provide recycled water of quality suitable for the full range of permitted uses, including irrigation of landscaping and food crops as well as supply augmentation of unrestricted recreational impoundments.

Individuals may send a letter of support to each of the following:

Ms. Shahla Faranak  
State Water Resources Control Board  
Division of Financial Assistance  
1001 "I" Street, 16<sup>th</sup> Floor  
Sacramento, CA 95814

and

Ms. Tracie Billington  
Department of Water Resources  
Div. of Planning & Local Assistance  
P.O. Box 942836  
Sacramento, CA 94236-0001

Date \_\_\_\_\_

Ms. Shahla Faranak  
State Water Resources Control Board  
Division of Financial Assistance  
1001 "I" Street, 16<sup>th</sup> Floor  
Sacramento, CA 95814

Ms. Tracie Billington  
Department of Water Resources  
Div. of Planning & Local Assistance  
P.O. Box 942836  
Sacramento, CA 94236-0001

Subject: Proposition 50, Integrated Regional Water Management Program, Step 2 Implementation Grant Application

Dear Ms. \_\_\_\_\_

As a \_\_\_\_\_ (title, businessman, farmer, land owner, groundwater producer, etc.) I support the Santa Ana Watershed Project Authority's (SAWPA) Santa Ana Integrated Watershed Plan 2005 Update, an Integrated Regional Water Management Plan, which includes Eastern Municipal Water District's (EMWD) tertiary treatment expansion/upgrade of the San Jacinto Valley Regional Water Reclamation Facility.

This project will \_\_\_\_\_ (include one or more of the specific project benefits listed).

This letter is in support of SAWPA's Proposition 50, Integrated Regional Water Management Program, Step 2 Implementation Grant Application, which includes EMWD's San Jacinto Valley Regional Water Reclamation Facility Tertiary Upgrade/Expansion.

Thank you for your consideration.

Sincerely,



## JUNE VOTER SERVICE ACTIVITIES

Preparations for the June Primary election included the distribution of two publications, the Easy Voter Guide and Pros & Cons. Easy Voter Guides are a collaborative effort with League of Women Voters of California taking lead responsibility for production and distribution. For Riverside County, the Guide is printed in five languages—English, Spanish, Vietnamese, Korean, and Chinese. Because grant money was obtained, these pamphlets were available free and could be ordered in quantity by any library, school or community organization.

At 15 cents per copy, the Pros & Cons, a traditional informational newspaper with nonpartisan arguments for and against ballot measures, presented bilingual background material on Propositions 81 & 82. This League purchased the Pros & Cons from treasury funds and made copies available to schools and community groups free of charge.

Smart Voter, the website providing candidates a free venue to post their biography, philosophy, position statements, and contact information was again coordinated for Riverside County by Betty Mann, Francis Talbot-White, Trudell Een and Charolette Fox. Links to the Registrar of Voters, candidate campaign headquarters, ballot look-up, precinct polling locations, and much more was on-line for easy access. A feedback feature allows viewers to ask questions about deadlines, election procedures, where to locate early voting sites, or how to register on-line.

In March, stepped up outreach efforts were discussed at a Regional Voter Service Training workshop held at the March Air Field Museum. Attendees renewed their commitment to providing “the usual” services, but also explored new ways to increase voter education, voter registration, and voter turnout. As other community organizations now emulate the League’s format for candidate forums or informational presentations, our help is needed as trainers and moderators. As such, the door is open to some exciting possibilities.

SB 61, legislation that speaks to Common Interest Group elections, is one such instance where our leadership is needed. Homeowner Associations are the largest segment of community life that is required to conduct elections for their common interest. The legislation directs that certain aspects of HOA business must include an impartial outside party to participate in and/or oversee the election.

Members who attended the state League Leadership Council in Sacramento May 6 & 7, learned more about the legislation during a workshop: “Running Local Elections.”

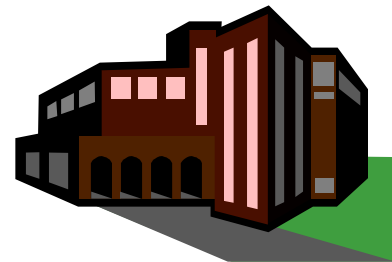
*If you would like to learn more about voter service in general, or about Common Interest Elections, plan to attend the Temecula Unit Meeting on Saturday, July 22, 2:00-4:00pm, at the Temecula library. No cost to attend.*

## LATEST ON COMMUNITY COLLEGES: Fact Sheet #3 For Legislators

On May 1, 2006, The League of Women Voters of California Education Fund sent two copies of the new *Community Colleges: Fact Sheet #3 for Legislators* to the Sacramento offices of all California assemblymembers and senators—one for each legislator and one for each of their education aides.

*Fact Sheet #1 and 2* are available on the LWVC Web site at [www.lwvc.org](http://www.lwvc.org) (click on “Citizen Education” under “Voter Education” on the side bar, then on “Community College System Study,” and finally on “California Community Colleges: Fact Sheet for Legislators.”) *Fact Sheet #3* will be posted on the Web site very soon.

These materials are prepared by the Education Committee of the Santa Clara County Leagues and approved by the LWVC Education Fund. The publications are funded by a grant from the William and Flora Hewlett Foundation.



## LEGISLATIVE PRIORITIES FOR 2006

Adopted by the LWVC Board of Directors March 12, 2006

To maximize resources at the state level, the LWVC Legislative Committee met to determine the general categories for bills and initiatives that could be addressed for the balance of the year. The three areas in bold remain unchanged from the adopted priorities determined by the membership at the 2005 state convention. Items 2-5 amplify the Board's commitment to be more responsive to the needs of our program directors, legislative consultants, and local League interests.

### 1. Priority Issues

#### **Redistricting Reform**

- Support redistricting by an independent commission using fair criteria and an open, transparent process

#### **State and Local Finances**

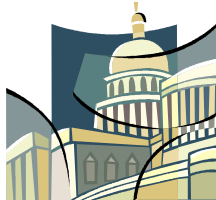
- Support responsible financing for infrastructure improvement and development
- Support equitable and adequate generation and distribution of tax revenues

#### **Health Care**

- Support a universal single payer health care system
- Support continued funding of the safety net

2. Support requests from local Leagues and ILOs for advocacy on bills of specific interest to their jurisdictions.
3. Take action as appropriate on core issues: Elections, Voting Rights, Campaign Finance Reform, and Reproductive Choices.
4. Consider program director recommendations for action on the highest priority bills in their program areas.
5. Review all statewide ballot measures and recommend a position or neutrality on each one to the LWVC Board of Directors.

For late-breaking or in-depth information, access the state and national websites from our local website, [www.swrc.ca.lwvnet.org](http://www.swrc.ca.lwvnet.org).



## INFRASTRUCTURE BOND UPDATE

The specific benefits, costs, and projects intended to be covered by this bond proposal are still emerging. Through conference calls, meetings, and research, our latest information is still part speculation and part fact. Some of the following is from media reports.

- the major components are education, transportation, and flood control/levees
- high speed rail may be out
- water issues are still big, and opposition to new water storage projects is expected to continue, with perhaps the Lake Perris reservoir in Riverside County being an exception
- because an initiative on water/parks may be ready for the voters, most of the provisions on water/parks may not be in the bond proposal

## PARKS-WATER BOND CLOSER TO BALLOT

*(excepted from San Jose Mercury News, April 27, 2006, Paul Rogers, staff writer)*

“A coalition of 11 leading environmental groups has turned in nearly double the number of signatures needed to qualify the largest parks and water bond in state history for the November ballot...

“The measure would raise \$5.4 billion to shore up aging levees in San Francisco Bay’s delta, build new drinking water treatment plants, fund flood control, restore salmon runs and purchase new parks from Monterey Bay to Lake Tahoe to Los Angeles. Roughly half would fund parks and half water projects. None is for building new dams...

“Because California’s population is growing by more than 500,000 people every year...the group contends that the state must preserve beaches, forests, rivers and streams before they are lost to sprawl...

“Critics call the measure a freelance effort that should have been included in a more coordinated statewide plan for spending...still unclear if what happens if Schwarzenegger and lawmakers come to an agreement. Recently they have said they are negotiating a \$30 billion bond measure that would include roads, schools and levees, without much for parks.

“The effort reflects the breakdown in Sacramento, said pollster Mark Baldassare of the Public Policy Institute in San Francisco. ‘There’s a vacuum, and in the absence of a measure from the Legislature and governor, it provides an opportunity for interest groups to fill that vacuum.’ “  
[www.mercurynews.com/mld/mercurynews/news/politics/14440684.htm](http://www.mercurynews.com/mld/mercurynews/news/politics/14440684.htm)

**The choice is simple.  
You can either stand up and be counted in,  
or, you can lie down and be counted out.**



QUOTES OF THE MONTH

"To fly, we have to have resistance."  
Maya Lin, architect

"Those who contemplate the beauty of the earth  
find reserves of strength that will endure as long  
as life lasts."  
Rachel Carson, scientist and environmentalist

"I believe unconditionally in the ability of people to  
respond when they are told the truth. We need to  
be taught to study rather than to believe, to inquire  
rather than to affirm."  
Septima Clark, educator and civil rights activist



To insure that your newsletter and other  
correspondence reaches you, please remember to  
report changes to us.  
Contact Charolette Fox (951) 302-0180.

*Guests are always  
welcome !!*

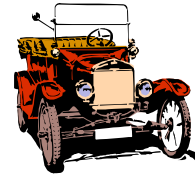
PLEASE REMEMBER US IN YOUR  
WILL OR TRUST

STAYIN' IN TUNE

Keep your mind alive! Learn about issues,  
meetings and events by visiting our website  
[www.swrc.ca.lwvnet.org](http://www.swrc.ca.lwvnet.org)



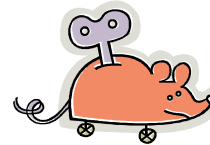
Donate your old car to League!



Thinking of turning in ol' Betsy for a shiny new  
hybrid?

Donate your used car, boat, RV or motorcycle by  
calling 1-800-320-0476. You'll get a deduction on  
your taxes, avoid a hassle at the DMV and provide a  
new source of funding for League.

Be sure to mention that the donation is for the  
League of Women Voters.

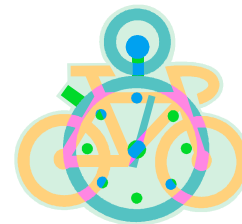


The engine won't go without volunteers like  
you!

Contact Sue Leuschen to learn what you can do to  
help with elections in 2006.  
[shoelace@lasercom.net](mailto:shoelace@lasercom.net)

Contact Betty Mann to help with activities in the  
desert area.  
[blm65054@att.net](mailto:blm65054@att.net)

Contact Charolette Fox if you want to help with  
meeting activities in southwest county. We can  
always use volunteers at the sign-in table, greeters,  
note takers, or discussion leaders.  
[lottiefox@verizon.net](mailto:lottiefox@verizon.net)



The human race is the one that counts.  
To win, you have to keep your eye  
on the finish line.

# VOTER

## League of Women Voters of Southwest Riverside County

32800 Hupa Drive  
Temecula, CA 92592

*Address Correction Requested*

### FIRST-CLASS MAIL

If you enjoyed this issue, why not  
share it with a friend? Please pass  
it on and help us build our readership  
Thank you.

#### VOTER

Published nine times a year by the League of  
Women Voters of Southwest Riverside County

President:	Charolette Fox	951-302-0180
Secretary:	Daisy McCleary	951-845-7191
Treasurer:	Diane Mitchell	951-927-1775
Voters Service:	Sue Leuschen	951-765-5448
Legislative Action:	Charolette Fox	951-302-0180
Desert Unit Coord:	Betty Mann	760-200-3877

Email: [lwv.swriverside@verizon.net](mailto:lwv.swriverside@verizon.net)

*The League of Women Voters is a nonpartisan organization that encourages the informed and active participation of citizens in government and influences public policy through education and advocacy. The League does not support or oppose political parties or candidates. We do, however, advocate for or against issues based on positions arrived at by member consensus. Membership is open to men and women of voting age.*

It's easy to join the League of Women Voters!

ANNUAL DUES (include membership in local,  
California, and National Leagues):

Individual - \$50.00  
Household - \$25.00  
Student - \$36.00

Make checks payable to:  
LWV Southwest Riverside County  
Mail to: Diane Mitchell  
43931 Mandarin Drive  
Hemet, CA 92544

Name(s): \_\_\_\_\_

Address: \_\_\_\_\_

Phone: \_\_\_\_\_

E-mail: \_\_\_\_\_

Check one: \_\_\_\_\_ new \_\_\_\_\_ renewal

Contribution: \_\_\_\_\_

TOTAL AMOUNT OF CHECK: \_\_\_\_\_

Dues and contributions to the League are not deductible for  
Federal Income Tax Purposes.